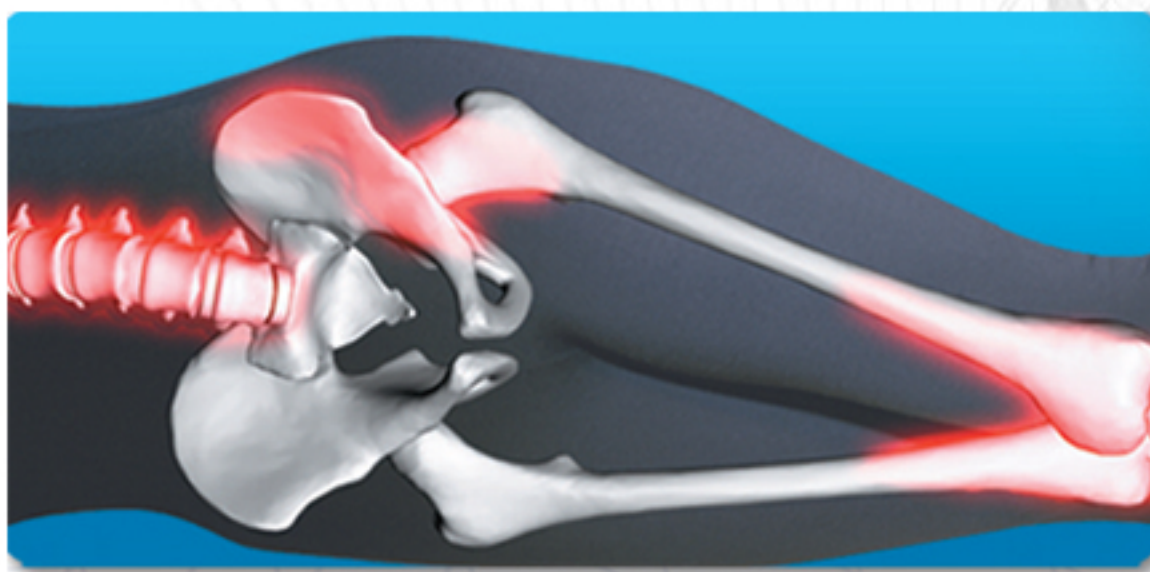
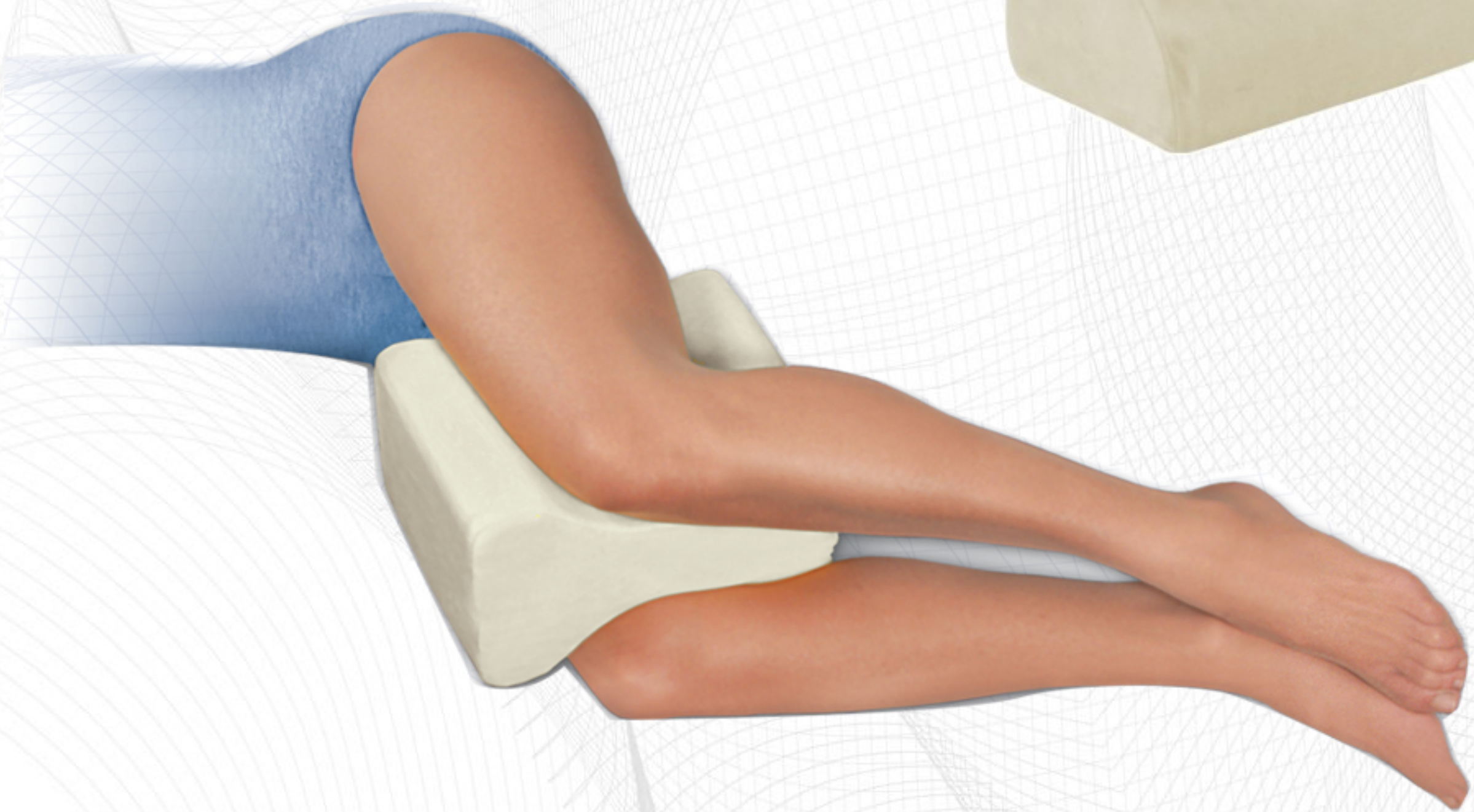


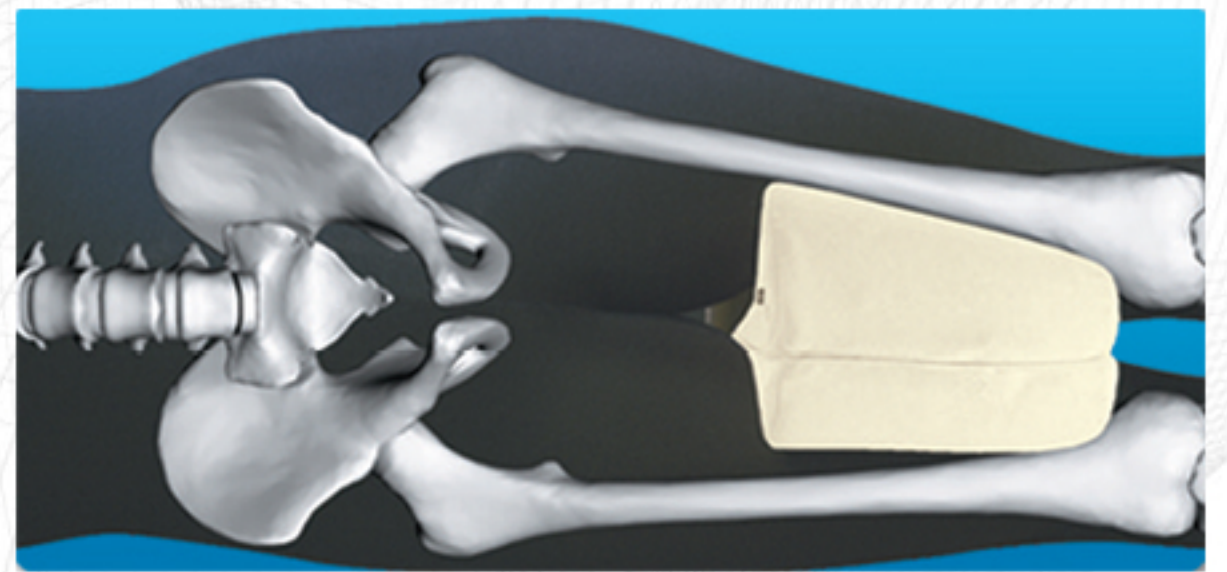
CONTOUR Leg Pillow

Support and Align Your Lower Back

- Ideal for sidesleepers
- Restores alignment of back and hips
- Stabilizes the pelvis and lower back
- Cushions knees and legs
- Soft velour cover removes for machine washing



No support between the legs can strain lower back, hips and knees



Restore natural alignment, and reduce pressure on hips, knees and joints.